

1059

AURA



SPECIFICATIONS:

4.7 kg	CRI 82+ 3K and 4K	CRI 70+ 5K	2 way tilt 5°	Class I	IP67	CE	5 Year warranty	Made in Australia
--------	----------------------	---------------	---------------	---------	------	----	--------------------	-------------------

CONSTRUCTION & DESIGN

- LED adjustable exterior uplighter
- Trim constructed in cast AISI 316 brushed stainless steel and body constructed in AISI 304 stainless steel and finished in black powder-coat paint
- 10mm clear toughened cool touch glass and durable silicone seals providing IP67 protection
- Plastic installation well included with each fitting to facilitate installation and maintenance
- 2 way internal tilt adjustable light source

OPTICAL & THERMAL PERFORMANCE

- Optics and efficient heatsink provides premium optical and thermal performance
- Efficient optical control available in various beam angles with no harsh cut off and ultra low glare

ELECTRICAL SYSTEM

- Supplied standard with a integral leading and trailing edge mains dimmable driver (refer to dimming option table)
- Power factor > 0.9 with active power factor correction
- Input voltage 220-240V, 50/60 Hz
- Supplied with 500mm input cable




TECHNICAL PERFORMANCE

- 22W or 28W total system power consumption with overload and short circuit protection
- >65,000 hours lifespan (L70)
- Premium quality LED Module with high Lumen output per watt
- Chromaticity tolerance (macAdam step) - 2
- Available in 3K, 4K or 5K colour temperature with low colour shift over time
- CRI 90+ is available upon request

CODE ORDERING GUIDE:

PRODUCT CODE / DIM CODE - COLOUR CODE

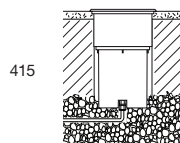
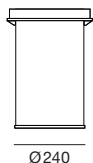
Example: 1059-SP-3K-22W-28 or 1059-SP-3K-22W/DALI-28

SYSTEM POWER	COLOUR TEMP.	 24° SP	 36° FL	 47° WFL	HOT LED LUMENS	LUMINAIRE LUMEN OUTPUT		
		PRODUCT CODE				SP	FL	WFL
22W	3K	1059-SP-3K-22W	1059-FL-3K-22W	1059-WFL-3K-22W	2671	2262	2313	2292
	4K	1059-SP-4K-22W	1059-FL-4K-22W	1059-WFL-4K-22W	2772	2351	2399	2380
	5K	1059-SP-5K-22W	1059-FL-5K-22W	1059-WFL-5K-22W	2512	2128	2178	2153
28W	3K	1059-SP-3K-28W	1059-FL-3K-28W	1059-WFL-3K-28W	3667	3104	3144	3148
	4K	1059-SP-4K-28W	1059-FL-4K-28W	1059-WFL-4K-28W	3805	3225	3261	3266
	5K	1059-SP-5K-28W	1059-FL-5K-28W	1059-WFL-5K-28W	3447	2918	2955	2960

INSTALLATION WELL

Installation well included

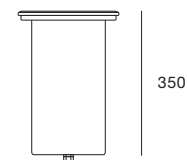
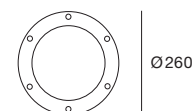
Nylon plastic well to facilitate installation & maintenance. Supplied with each fitting. Height of plastic well is 243mm and the diameter is 154mm. The luminaire must be mounted with suitable drainage as shown below.



DIM CODE	OPTIONS	8W	13W
/DALI	Dali Dimming / Switch Dim	✓	✓
/DSI	Digital Dimming	✓	✓
/AD	Analogue Dimming 1-10V	×	×
/DIM	Leading & Trailing edge	Std	Std

COLOUR CODE

-28	Brushed Stainless Steel
-----	-------------------------



MAX
2000kg



A maximum trafficable load weight of 2000kg is allowed. Prolonged standing on floodlight when lit is not recommended.